

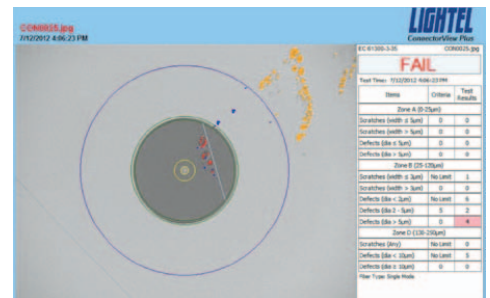
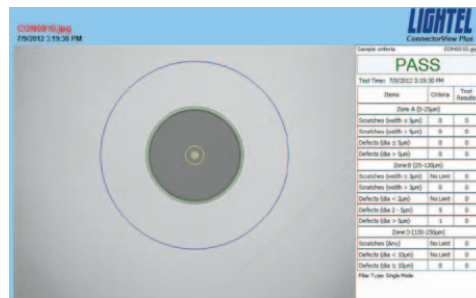
# ConnectorView™ Plus

Since 2005 Lightel has been developing eye-safe hand-held video microscopes for inspecting fiber optic connector endfaces. With over 25,000 microscopes built and sold, Lightel products are recognized for their quality and reliability.

As the demands for more bandwidth have increased, Lightel continues to provide ever more innovative solutions for inspection in the field.

ConnectorView™ Plus software from Lightel is designed for users needing portable automated Pass / Fail software to check for fiber optic connector endface contamination. Whether you want to improve objective evaluation of connector cleanliness in the field, train others to recognize acceptable standards, or improve documentation, ConnectorView Plus is designed to you save time and improve your accuracy.

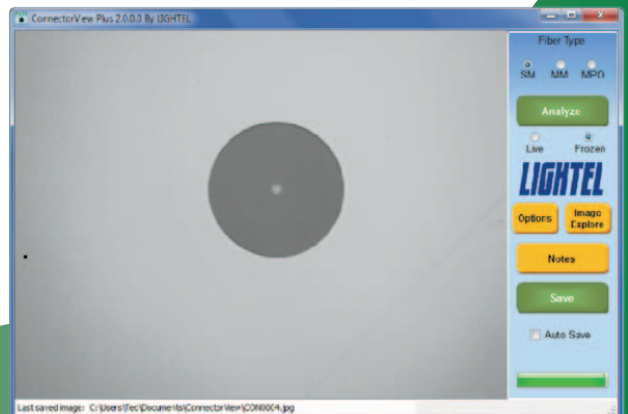
Self-calibrating, and virtually instantaneous, ConnectorView Plus will highlight contamination and defects and create an analysis report. It will capture and save the image together with that pass/fail report. A summary report can also be automatically generated.



## Features:

- Self-calibrating – no need to constantly readjust settings
- Single mode and Multimode connector settings
- Adjustable acceptance criteria – Use the default IEC 61300-3-35 standard or set to your own corporate requirements. Create as many profiles as you need. The criteria used are shown on every report.
- Live or frozen connectors can be analyzed.
- Notes – simple automated analysis reports or include detailed notes and observations.
- Summary reports available in Excel or Text file for every saved analysis report
- Save only the reports you choose, or save them automatically
- Automatically locate the ferrule or manually position it
- Install on multiple computers and use with multiple Lightel microscopes.

(One seat at a time with full functionality is available per license.)



*Access all the key controls from the opening window. You can create your Analysis Report in seconds.*

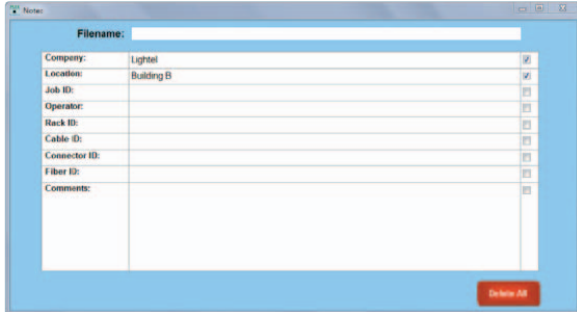


# LIGHTEL

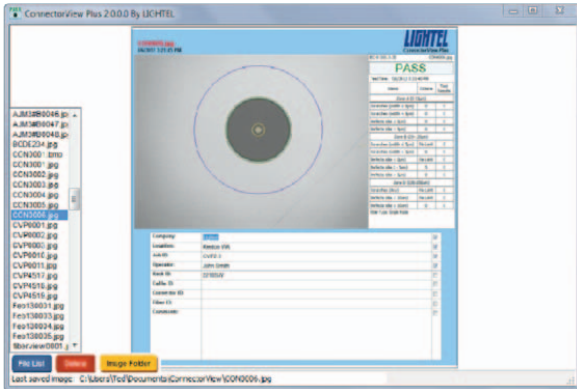
2210 Lind Ave SW, Suite 100  
 Renton, WA 98057 USA  
 (425) 277-8000 Tel  
 (425) 277-5280 Fax  
[www.lightel.com](http://www.lightel.com)

# Using ConnectorView™ Plus

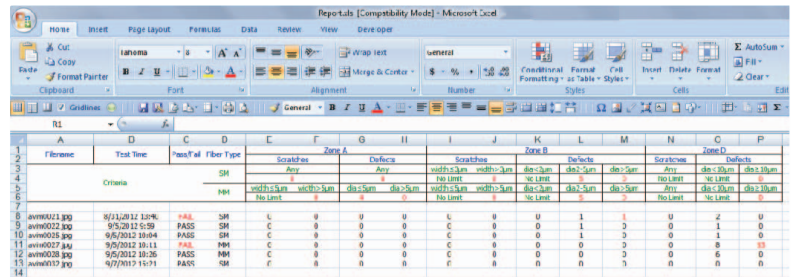
Include notes in an Extended Analysis Report



Give each Analysis Report an individualized filename or generate the name automatically.



Easily access any previous Analysis Report or your Summary Report.



Whether you bought your Lightel video microscope in 2005 or are buying today, you can use ConnectorView Plus.



System Requirements: Windows XP, Windows Vista, Windows 7 32 and 64-bit systems.

Can integrate with Excel 2003, 2007 and 2010.

**LIGHTTEL**

2210 Lind Ave SW, Suite 100  
 Renton, WA 98057 USA  
 (425) 277-8000 Tel  
 (425) 277-5280 Fax  
[www.lighttel.com](http://www.lighttel.com)